

Tube LED Machine Lights resistant to coolants and lubricants

STRONG LIGHT INTENSITY WITH GLARE-FREE DIFFUSION

Using high efficiency LEDs along with a diffuser, our new tube LED machine lights deliver bright light while taking up a minimal amount of machine space. They match the brightness of modern LEDs with a 5000 K color temperature while eliminating glare.

Protected by a clear, durable borosilicate glass cover, they are robust enough for nearly all standard applications in the automobile industry and production engineering. They are IP67-rated for resistance to most coolants and lubricants, and shock- and vibration-proof. And installation is simple, using standard M12 connections.

Our new portfolio of 45 mm diameter lights includes five lengths from 420 mm to 1200 mm, providing a light intensity

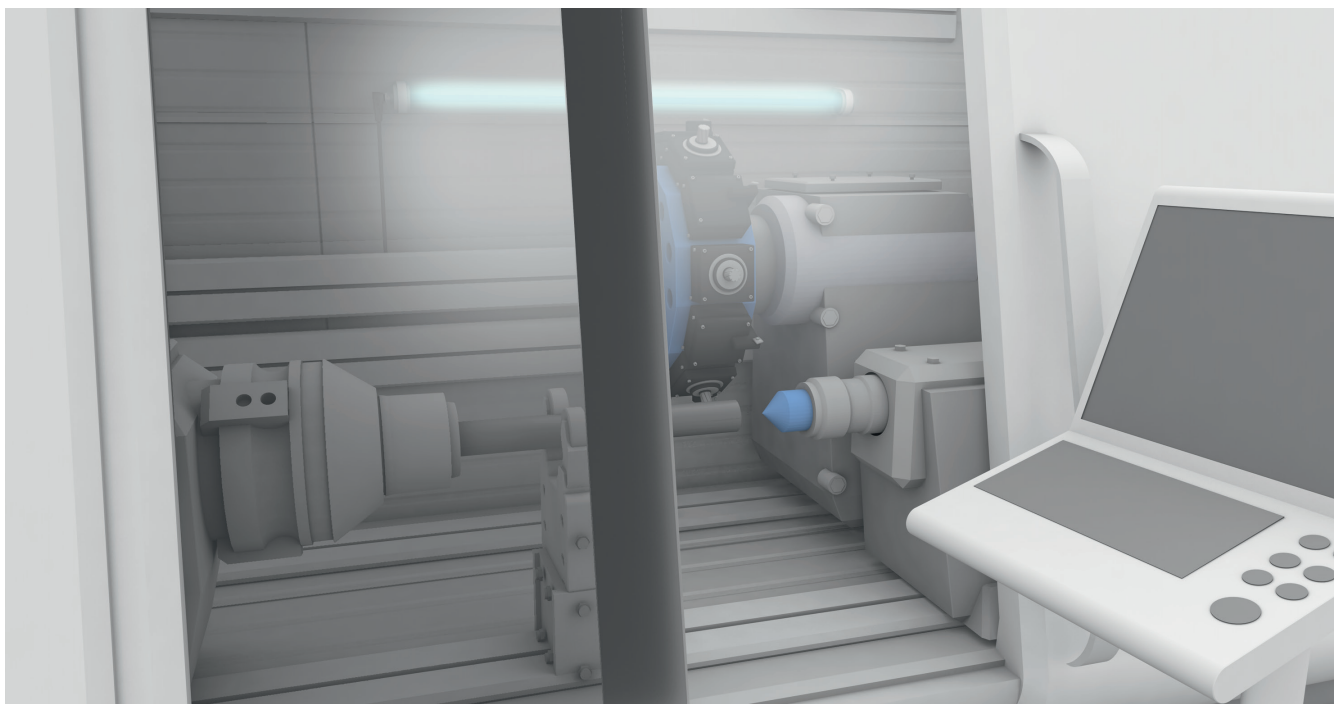
from 1800 to 5400 lumens. They provide almost 5 lumens per millimeter, and deliver 150 lumens per watt efficiency.

These LED machine lights are maintenance-free, and since no grounding is needed, their low 24 V DC protective voltage offers a high degree of safety. They provide optimal energy efficiency for overall cost savings.

They are well-suited for a myriad of applications including lighting for machine rooms, machining centers, machine tools, lathes, milling, and grinding machines, automated assembly cells, semi-automated workstations, moisture proof applications, any enclosed machine, and lighting for restricted access barriers (RABs) in clean rooms.

Features

- Diffuser for glare-free, homogeneous large-area lighting with 5000 K color temperature
- Shock- and vibration-proof
- IP67-rated protection for harsh environments, resistant to most coolants and lubricants
- High-efficiency LED technology with low energy consumption
- Standard M12 plug-in connection

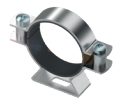


MACHINE LIGHTING



	BAE00ZM	BAE00ZN	BAE00ZP	BAE00ZR	BAE00ZT
Operating voltage	22...28 V DC	22...28 V DC	22...28 V DC	22...28 V DC	22...28 V DC
Light emission area	380 mm	560 mm	760 mm	960 mm	1160 mm
Port power	12 W	18 W	24 W	30 W	36 W
Illumination	447 lux at 1 m	541 lux at 1 m	675 lux at 1 m	819 lux at 1 m	964 lux at 1 m
Luminous flux	1800 lm	2700 lm	3600 lm	4500 lm	5400 lm
Light type	LED white light, diffuse	LED white light, diffuse	LED white light, diffuse	LED white light, diffuse	LED white light, diffuse
Current consumption	500 mA	750 mA	1 A	1.25 A	1.5 A
Dimensions	Ø 45 × 420 mm	Ø 45 × 600 mm	Ø 45 × 800 mm	Ø 45 × 1000 mm	Ø 45 × 1200 mm
Degree of protection	IP67	IP67	IP67	IP67	IP67
Approvals	CE, EAC	CE, EAC	CE, EAC	CE, EAC	CE, EAC
Ambient temperature	-20...+40 °C	-20...+40 °C	-20...+40 °C	-20...+40 °C	-20...+40 °C
Housing material	Anodized aluminum, borosilicate glass	Anodized aluminum, borosilicate glass	Anodized aluminum, borosilicate glass	Anodized aluminum, borosilicate glass	Anodized aluminum, borosilicate glass
Connection	M12 male, 4-pin	M12 male, 4-pin	M12 male, 4-pin	M12 male, 4-pin	M12 male, 4-pin

ACCESSORIES



	BAM035Z	BAM0360	BAM035Y
Description	Mounting clamp for machine lighting Ø45 mm, anodized aluminum	Mounting clamp for machine lighting Ø45 mm, steel	Retaining safety for mounting clamp BAM0360, stainless steel

CONNECTORS



	BCC032F	BCC032H	BCC05F8	BCC05F9
Description	M12 female, 4 pin, 2 m PUR cable	M12 female, 4 pin, 5 m PUR cable	M12 female, 5 pin, TPE yellow, 2 m cable, drag chain compatible	M12 female, 5 pin, TPE yellow, 5 m cable, drag chain compatible