

# Rittal – The System.

Faster – better – everywhere.

## ► **SE 8 Delivers** Greater Durability and Customization Over Unibody Enclosures



Change for the Better.

ENCLOSURES

POWER DISTRIBUTION

CLIMATE CONTROL

IT INFRASTRUCTURE

SOFTWARE & SERVICES



FRIEDHELM LOH GROUP

# Rittal – The System.

Faster – better – everywhere.



## SE 8 Enclosure □ Stands Above In Quality and Value

As industrial facilities replace or upgrade control systems, many plant engineers are moving beyond the challenges of unibody enclosure designs. With unibody enclosures, the skins are welded together to support the load of the system. As a result, system integrators, OEMs and facilities are limited in the configurations and modifications to meet end-use needs. Because the lifecycle of a typical industrial enclosure is filled with planned and unplanned modifications and repairs, using a unibody enclosure can increase costs and downtime.

### Stand-Alone Design

By comparison, the Rittal SE 8 enclosure brings together the benefits of modular design and accessories with a price point that competes with unibody enclosures. Because the strength and interior mounting are handled by the roll-formed frame section of the enclosure, the SE 8 delivers improved durability and 30 percent more internal space than comparable unibody designs. In addition, the SE 8 is available in 16-gauge carbon or stainless steel, and features the standard, reversible TS 8 door to accommodate modifications over the lifecycle of the enclosure.

For larger control systems, the SE 8 is available in a double-door design starting at 39". To ensure components remain protected, the single-door carbon-steel model is UL Type 12 and 3R with a Type 4 version available. The double-door design is currently rated at Type 12. The single-door stainless-steel model is UL Type 12, 3R with a Type 4X version available.

Unlike unibody enclosures, the SE 8 features a variety of interchangeable accessories, including:

- Cable entry options
- Plinth, cable base and flex-block
- Locking system
- Comfort handle, inserts
- TS 8 interior system accessories
- Swing frames, chassis, rails and partial panels
- Lighting and grounding systems



The **PREFERRED**  
choice for freestanding  
enclosures for industrial  
environments





## Choose the Best: SE 8 Enclosures

### Stand-Alone Enclosures

**Roof and sides form a single piece**  
– Non-bayable single- or double-door  
– Welded base frame

**Integrated roof with cheese-head bolts**  
– Eyebolts can be added as accessory

**Integrated roll-formed TS 8 frame**  
– 2 integrated mounting levels  
– 25 mm hole pattern

#### Door

– 2 mm rolled sheet metal or stainless steel  
– Right-hand hinged, reversible door and handle with double-bit locking insert

#### Rear Wall

– Removable rear panel  
– Split rear walls start at 63"

**Closed housing body (roof/ sides)**  
– 1.5 mm (16 ga.)

#### Vertical frame members

– 1.5 mm (16 ga.)  
– Standard TS 8 25 mm profile

#### Mounting Panel

– Depth-adjustable  
– 3 mm (11 ga.)

#### Horizontal frame members

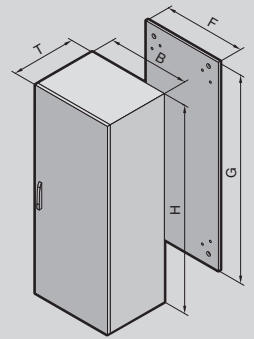
– 1.5 mm (16 ga.)  
– Depth and width same as TS 8  
– Symmetrical roof frame

#### Grounding

– Integrated potential equalization for back panel and gland plates

#### System accessories

– Full line of TS 8 accessories  
– High levels of customization, cable and power management



### SE 8 Carbon Steel – Type 12, 3R (1-Door only)

Model No.	Height inches (mm)	Width inches (mm)	Depth inches (mm)	Door(s)
SE 5830.500	71" (1800 mm)	24" (600 mm)	16" (400 mm)	1
SE 5831.500	71" (1800 mm)	31" (800 mm)	16" (400 mm)	1
SE 5832.500	79" (2000 mm)	31" (800 mm)	16" (400 mm)	1
SE 5833.500	79" (2000 mm)	31" (800 mm)	20" (500 mm)	1
SE 5834.500	79" (2000 mm)	31" (800 mm)	24" (600 mm)	1
SE 5840.500	71" (1800 mm)	39" (1000 mm)	16" (400 mm)	2
SE 5841.500	71" (1800 mm)	47" (1200 mm)	16" (400 mm)	2
SE 5842.500	71" (1800 mm)	63" (1600 mm)	16" (400 mm)	2
SE 5843.500	79" (2000 mm)	47" (1200 mm)	16" (400 mm)	2
SE 5844.500	79" (2000 mm)	47" (1200 mm)	20" (500 mm)	2
SE 5845.500	79" (2000 mm)	47" (1200 mm)	24" (600 mm)	2
SE 5846.500	79" (2000 mm)	71" (1800 mm)	20" (500 mm)	2

### SE 8 Carbon Steel – Type 4

Model No.	Height inches (mm)	Width inches (mm)	Depth inches (mm)	Door(s)
SE 5830.580	71" (1800 mm)	24" (600 mm)	16" (400 mm)	1
SE 5831.580	71" (1800 mm)	31" (800 mm)	16" (400 mm)	1
SE 5834.580	79" (2000 mm)	31" (800 mm)	24" (600 mm)	1



#### SE 8 304 Stainless Steel – Type 12, 3R (1-Door only)

Model No.	Height inches (mm)	Width inches (mm)	Depth inches (mm)	Door(s)
SE 5850.500	63" (1600 mm)	24" (600 mm)	16" (400 mm)	1
SE 5851.500	71" (1800 mm)	24" (600 mm)	20" (500 mm)	1
SE 5852.500	71" (1800 mm)	31" (800 mm)	20" (500 mm)	1
SE 5853.500	79" (2000 mm)	31" (800 mm)	24" (600 mm)	1
SE 5854.500	71" (1800 mm)	39" (1000 mm)	16" (400 mm)	1
SE 5855.500	79" (2000 mm)	47" (1200 mm)	20" (500 mm)	2

#### SE 8 304 Stainless Steel – Type 4x

Model No.	Height inches (mm)	Width inches (mm)	Depth inches (mm)	Door(s)
SE 5850.580	63" (1600 mm)	24" (600 mm)	16" (400 mm)	1
SE 5852.580	71" (1800 mm)	31" (800 mm)	20" (500 mm)	1
SE 5853.580	79" (2000 mm)	31" (800 mm)	24" (600 mm)	1



## SE 8 PC Enclosure □ Protects Vital Components

Rittal has simplified the protection for PC components in industrial environments. PC enclosures based on SE 8 act as a workstation and protect the interior components. The PC enclosure system easily accommodates entire computer configurations – from monitor to printer.

### Design

- Self-supporting, integral design creates high stability as a stand-alone enclosure
- Rear door allows easy access for servicing
- Triple surface treatment provides optimal protection against corrosion
- Available in carbon steel and stainless steel

### Excellent access protection

- One-piece sides and roof
- Lockable keyboard drawer
- Glazed door with single-pane safety glass ensures robust protection
- Roll-formed sides create a high level of protection against unauthorized access

*Supporting carbon steel models including: 5366.000, 5366.100, 5366.200, 5366.300, 5366.400, 5368.000, 5386.000*

*Supporting stainless steel models including: 4650.100*

## Increased Customization

In addition, the comprehensive range of accessories enables the PC Enclosure to be turned into a fully-utilized control enclosure, which ensures protection against humidity and dirt, temperature fluctuations and unauthorized access.

### Universal interior installation

- Two symmetrical levels with identical pitch patterns in the width and depth
- Interior installation with two mounting levels

### Innovative operating concept

- Keyboard drawer with fold-out handle strip serving as a hand rest
- Integral mouse pad extension pulls out to the left or right
- Storage tray for mouse behind the keyboard
- Fold-out tray or desk section creates alternative operating space

### Dimensions

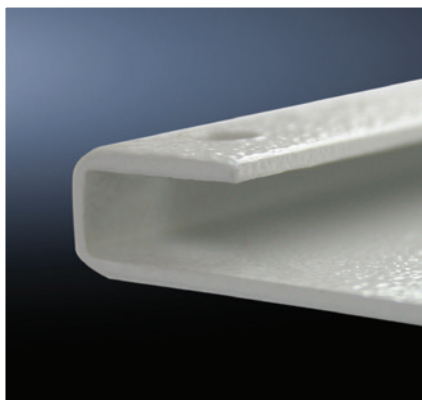
- Standard 24" x 63" x 24"
- 24" x 63" x 31": for applications with large printers
- 31" x 63" x 24": for use with monitors up to 24"

### Grounding

- PE conductor connection points on all relevant parts
- Grounding bolts with contact discs, paint-free and corrosion-proof
- Extensive range of accessories; grounding straps in various lengths and designs, grounding rails, central grounding points and PE busbars



SE 8 accessories  
create  
**unlimited**  
options for  
customization



# Rittal – The System.

**Faster – better – everywhere.**

## **Rittal North America LLC**

Woodfield Corporate Center

425 North Martingale Road, Suite 400 • Schaumburg, Illinois 60173 • USA

Phone: 937-399-0500 • Toll-free: 800-477-4000

Email: [rittal@rittal.us](mailto:rittal@rittal.us) • Online: [www.rittal.us](http://www.rittal.us)

## **Rittal Systems Ltd.**

6485 Ordan Drive • Mississauga, Ontario L5T 1X2 • Canada

Phone: 905-795-0777 • Toll-free: 800-399-0748

E-Mail: [marketing@rittal.ca](mailto:marketing@rittal.ca) • Online: [www.rittal.ca](http://www.rittal.ca)

## **Rittal Mexico**

Dr. Roberto Gayol 1219-1B • Col. Del Valle Sur, 03100 • Mexico, D.F.

Phone: (+52) (55) 5559-5369 • Toll-free: 01 800 8 Rittal (748.825)

E-Mail: [info@rittal.com.mx](mailto:info@rittal.com.mx) • Website: [www.rittal.com.mx](http://www.rittal.com.mx)

Change for the Better.

ENCLOSURES

POWER DISTRIBUTION

CLIMATE CONTROL

IT INFRASTRUCTURE

SOFTWARE & SERVICES



FRIEDHELM LOH GROUP